

The background of the entire page is a photograph of an industrial facility at night. The scene is dominated by a complex network of pipes and structures. In the foreground, several large pipes run parallel to each other, receding into the distance. To the right, a tall, vertical cylindrical tank is visible, with a pipe curving over its top. In the background, more industrial structures and a bright light source, possibly a moon or a large lamp, are visible against a dark sky. The overall color palette is dark with highlights from the facility's lights.

**Product
Specifications**

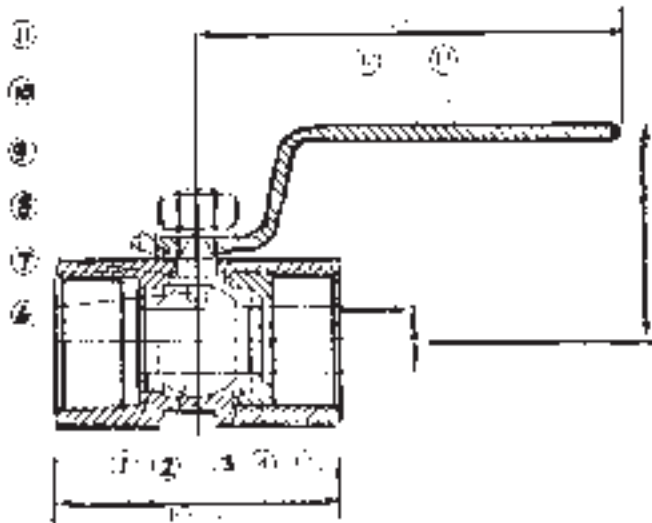
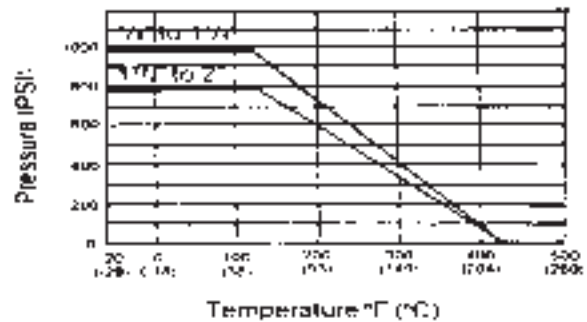


Model No. EX1S-10

One Piece Hexagon Reduced Port Stainless Steel Ball Valve - 800/1000 WOG

**Manufacturer Specifications: •API 598 •ASME B16.34 •ASME/AISI B.1.20.1 •MS-8F-25
•WW-V-35C**

Pressure Temperature Ratings



Material List - 3 Piece Stainless

No	Part Name	Specification	Qty
1	Ball Seal	PTFE	2
2	Ball	316	1
3	Joint Gasket	PTE	1
4	Body Insert	316	1
5	Body	316	1
6	Stem	316	1
7	Thrust Washer	PTFE	1
8	Stem Packing	PTFE	1
9	Gland Nut	304	1
10	Stem Washer	304	1
11	Stem Nut	304	1
12	Plastic Cover	PVC	1
13	Handle	304	1

All dimensions are in inches

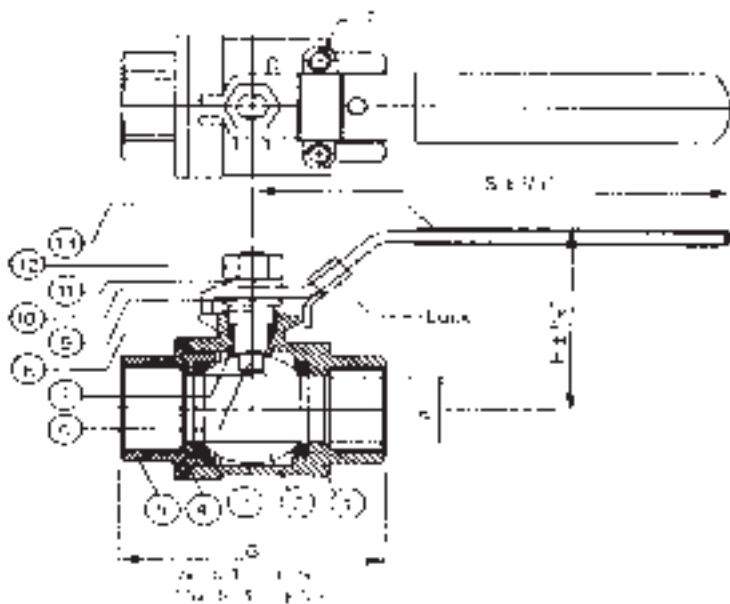
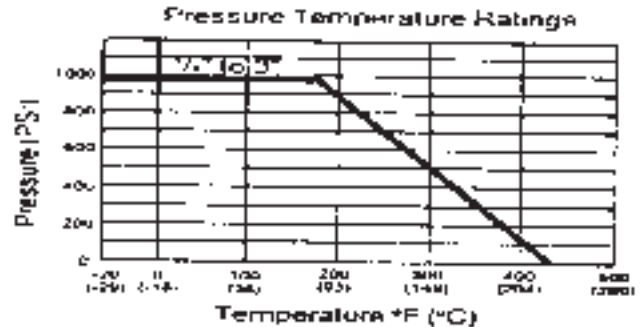
Part No.	Size	ØA	B	H	S	W (lb)
315000	1/4	13/64	1 17/32	1	2 3/8	1/8
315001	3/8	9/32	1 3/4	1 1/2	2 13/16	1/4
315002	1/2	3/8	2 1/4	1 3/4	3 7/16	3/8
315003	3/4	1/2	2	1 27/32	3 1/2	1/2
315004	1	19/32	2	1 31/32	4 1/8	1
315005	1 1/8	25/32	3	2	4 1/8	1 1/2
315006	1 1/2	31/32	3 1/4	2 23/32	5	2
315007	2	1 1/4	3	2 29/32	5	3



Model No. EX2S-10

Two Piece Stainless Steel Ball Valve - 1000 WOG

Manufacturer Specifications: * API 598 * ASME B16.34 * ASME/AISI B.1.20.1 * MSS-P-25 * WW-V-35C



Material List - 2 Piece Stainless			
No	Part Name	Specification	Qty
1	Body	316	1
2	Ball	316	1
3	Ball Seat	PTFE	2
4	Joint Gasket	PTFE	1
5	End Cap	316	1
6	Stem	316	1
7	Thrust Washer	PTFE	1
8	Stem Packing	PTFE	1
9	Grand Nut	304	1
10	Handle	304	1
11	Spring Washer	304	1
12	Stem Nut	304	1
13	Plastic Cover	PVC	1

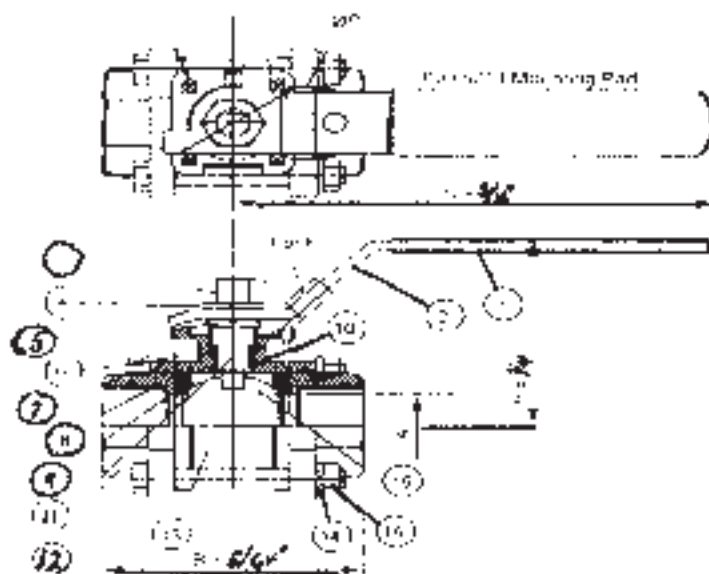
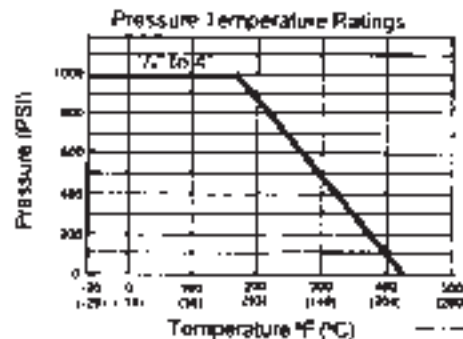
All dimensions are in inches

Part No.	Size	ØA	B	H	S	T	W (lb)
316016	1/4	15/32	2 1/8	1 31/32	4	10-24 UNC	1/2
316017	3/8	15/32	2 1/8	1 31/32	4	•	1/2
316018	1/2	19/32	2 17/32	2 1/16	4	•	3/4
316019	3/4	51/64	2 15/16	2 7/16	4	•	1 1/4
316020	1	63/64	3 7/16	2 15/16	6	•	2
316021	1 1/4	1 7/64	3 31/32	3 5/32	6	14-20 UNC	3
316022	1 1/2	1 1/2	4 21/64	3 8/16	7	↓	4 3/8
316023	2	1 31/32	5 13/16	3 7/8	7	↓	7
316024	2 1/2	2 9/16	6 1/2	5 7/16	9	↓	14 1/2
316025	3	3	7 3/8	5 25/32	9	↓	22

EXCALIBUR VALVES

Model No. EX3S-10

Three Piece Full Bore Stainless Steel Ball Valve - 1000 WOG
Manufacturer Specifications: * API 598 * ASME B16.34 * ASME/AISI B.1.20.1 * MSS-SP-25
*** WW-V-35C**



Material List - 3 Piece Stainless			
No	Part Name	Specification	Qty
1	Plastic Cover	PVC	1
2	Handle	304	1
3	Stem Nut	304	1
4	Spring Washer	304	1
5	Gland Nut	304	1
6	Stem packing	PTFE	1
7	Bolt	304	4-6
8	Packing	PTFE	2
9	Ball Seat	PTFE	2
10	Thrust Washer	PTFE	1
11	Stem	316	2
12	Cap	316	2
13	Body	316	1
14	Bolt Washer	304	4-6
15	Bolt Nut	304	4-6
16	Ball	316	1

All dimensions are in inches

Part No.	Size	ØA	B	H	S	ØP	T	W (lb)
316036	1/4	15/32	2 3/8	2 1/2	4 5/8	1 13/32	M5	7/8
316037	3/8	15/32	2 3/8	2 1/2	4 5/8	1 13/32	M5	7/8
316038	1/2	18/32	2 15/16	2 5/8	4 5/8	1 13/32	M5	1 1/4
316039	3/4	25/32	3 5/32	2 13/16	5 5/8	1 13/32	M5	1 1/4
316040	1	31/32	3 9/16	3 1/8	5 7/16	1 21/32	M5	3/4
316041	1 1/4	1 1/4	4 5/16	3 5/16	6 7/16	1 21/32	M5	4
316042	1 1/2	1 1/2	4 3/4	3 5/8	7 9/16	1 31/32	M6	5 1/2
316043	2	1 31/32	5 1/2	3 15/16	7 9/16	1 31/32	M6	8 1/2
316044	2 1/2	2 8/16	6 1/2	5 1/4	9 3/4	2 3/4	M8	16 3/8
316045	3	3	7 3/8	5 9/16	9 3/4	2 3/4	M8	24 1/2
316046	4	3 15/16	9 1/8	6 5/8	11 15/16	4	M10	45

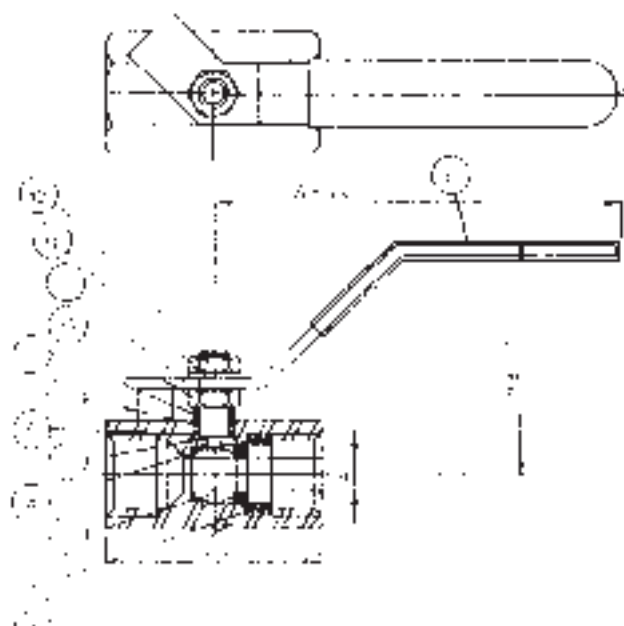
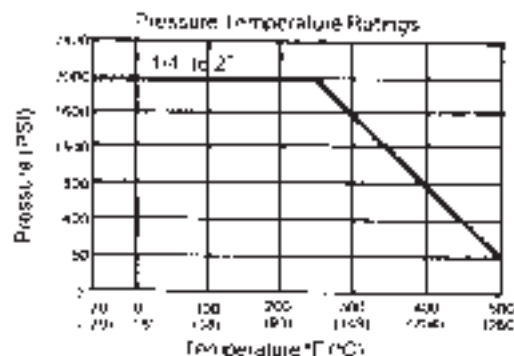


Model No. EX1C-20

One Piece Carbon Steel Ball Valve – 2000 WOG

Manufacturer Specifications: •API 598 •ASME B16.34 •ASME/AISI B.1.20.1 •MSS-SP-25 •WW-V.35C

•NACE MR0175



Material List - 1 Piece Carbon

No	Part Name	Specification	Qty
1	Body	AISI 1017	1
2	Cap	AISI 1017	1
3	Ball	ASTM A351 GR.CFBM	1
4	Ball Seats	PTFE	2
5	Thrust Washer	PTFE	1
6	Stem Packing	PTFE	1
7	Handle	304	1
8	Plastic Cover	PVC	1
9	Stem	316	1
10	Grand	304	1
11	Stem Washer	304	1
12	Stem Nut	304	1
13	Stem Nut	304	1

All dimensions are in inches.

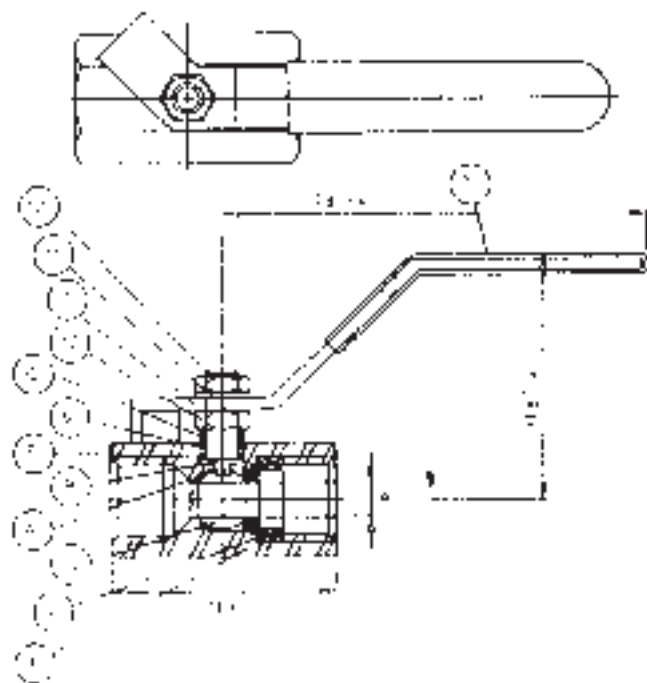
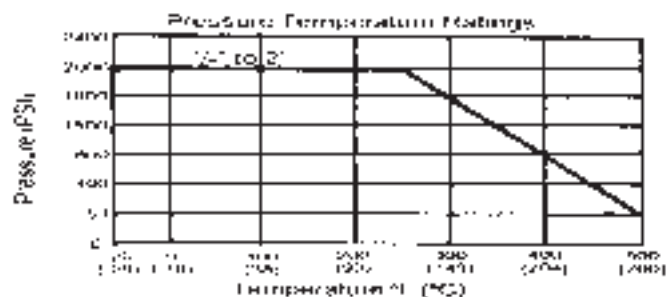
Part No.	Size	ØA	B	H	S	W (lb)
316128	1/4	3/16	1 5/8	1 1/8	2 3/8	3/16
316129	3/8	19/64	1 7/8	1 5/16	3 3/16	1/4
316130	1/2	25/64	2 3/16	1 15/16	3 9/16	5/8
316131	3/4	1/2	2 9/16	2 1/8	3 9/16	1
316132	1	5/8	3	2 9/16	4 5/16	1 3/8
316133	1 1/4	25/32	3 5/8	2 11/16	4 5/16	3
316134	1	63/64	3 13/16	2 13/16	5 1/8	3 3/8
316135	2	1 1/4	4 1/2	3 1/8	5 1/8	5 3/4



Model No. Ex1S-20

One Piece Hexagon Stainless Steel Ball Valve – 2000 WOG

Manufacture Specification: ●API 598 ●ASME B16.34 ●ASME/AISI B.1.20.1 ●MSS-SP-25
●WW-V-35C



Material List - 1 Piece Stainless

No	Part Name	Specification	Qty
1	Body	ASTM A351 GR.CF8M	1
2	Cap	ASTM A351 GR.CF8M	1
3	Ball	ASTM A351 GR.CF8M	1
4	Ball Seats	PTFE	2
5	Thrust Washer	PTFE	1
6	Stem Packing	PTFE	1
7	Handle	304	1
8	Plastic Cover	PVC	1
9	Stem	316	1
10	Gland	304	1
11	Stem Washer	304	1
12	Stem Nut	304	1
13	Stem Nut	304	1

All dimensions are in inches.

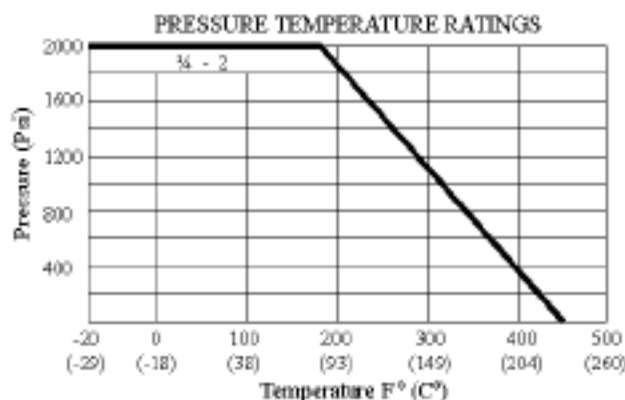
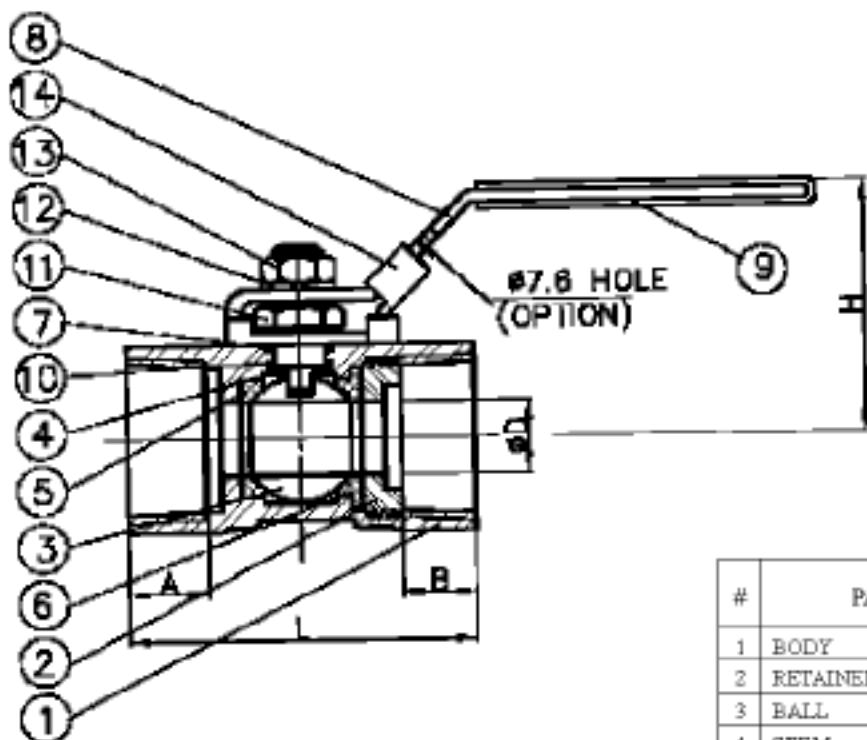
Part No.	Size	ØA	B	H	S	W (lb)
316120	1/4	3/16	1 5/8	1 1/8	2 3/8	3/16
316121	3/8	13/64	1 7/8	1 5/16	3 3/16	1/4
316122	1/2	25/64	2 3/16	2	3 9/16	5/8
316123	3/4	1/2	2 5/16	2 1/8	3 9/16	1
316124	1	5/8	3	2 9/16	4 3/8	1 3/8
316125	1 1/4	25/32	3 5/8	2 11/16	4 3/8	3
316126	1 1/2	31/32	3 13/16	2 13/16	5 1/8	3 3/8
316127	2	1 1/4	4 1/2	3 1/8	5 1/8	5 3/4



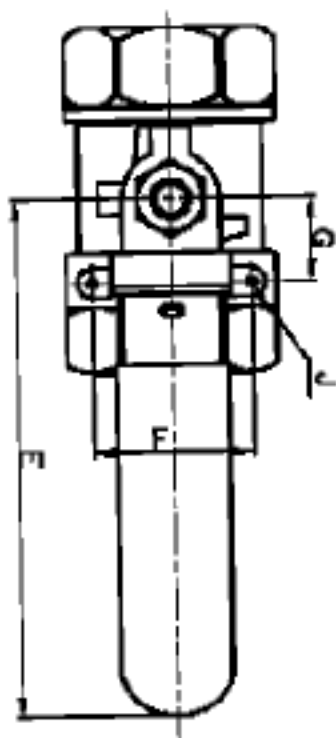
Model No. EX1SM-20

**One Piece Stainless Steel Ball Valve
Reduced Port - 2000 WOG**

Manufacturer Specifications: •API 598•ASME B16.34
•ASME/AISI B.1.20.1•MSS-SP-25•WW-V-35C



#	PART NAME	MATERIAL
1	BODY	ASTM A351 GR. CF8M
2	RETAINER NUT	SS316
3	BALL	ASTM A351 GR. CF8M
4	STEM	SS316
5	BALL SEAT	RPTFE
6	CAP SEAT	RPTFE
7	STEM PACKING	PTFE
8	HANDLE	SS304
9	HANDLE COVER	PLASTIC
10	THRUST WASHER	PTFE
11	GLAND	SS 304
12	HANDLE WASHER	SS 304
13	HANDLE NUT	SS304
14	LOCKING PLATE	SS304



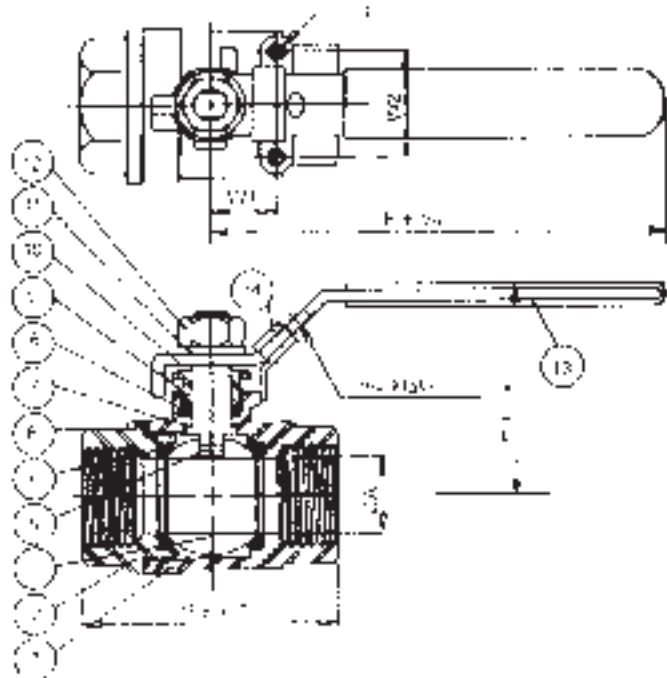
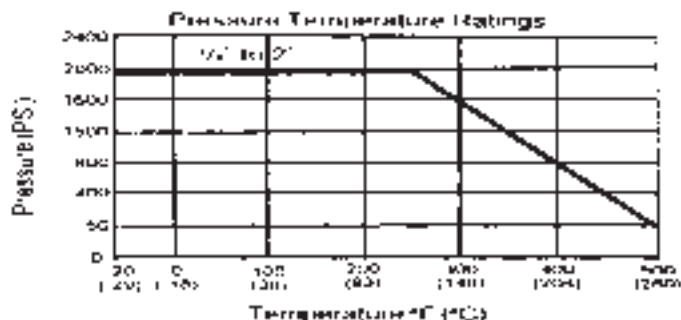
PART NO.	SIZE	OD	A	B	L	E	F	G	H	J	S
316436	¼	3/16	0.51	0.51	1.97	3.15	1.12	0.5	1.58	10-24 UNC	0.83
316437	⅜	19/64	0.51	0.51	1.97	3.15	1.12	0.5	1.58	10-24 UNC	0.83
316438	½	25/64	0.65	0.65	2.32	3.94	1.12	0.5	1.73	10-24 UNC	0.98
316439	¾	½	0.73	0.73	2.56	3.94	1.12	0.5	1.81	10-24 UNC	1.26
316440	1	5/8	0.91	0.91	3.23	4.72	1.37	0.87	1.97	10-24 UNC	1.54
316441	1¼	25/32	0.91	0.91	3.39	4.72	1.37	0.87	2.17	10-24 UNC	1.93
316442	1½	31/32	0.98	0.98	3.78	5.9	1.5	0.93	2.44	¼ - 20 UNC	2.17
316443	2	1½	0.98	0.98	4.22	5.9	1.5	0.93	2.76	¼ - 20 UNC	2.64



Model No. EX2C-20

Two Piece Carbon Steel Ball Valve - 2000 WOG

Manufacturer Specifications: * API 598 * ASME B16.34 * ASME/AISI B.1.20.1 * MSS-3P-25 * WW-V-35C
* NACE MR0175



Material List - 2 Piece Carbon

No	Part Name	Specification	Qty
1	Body	ASTM A216 Carbon	1
2	End Cap	ASTM A216 Carbon	1
3	Ball	ASTM A315 GR.CF8M	1
4	Ball Seats	RPTFE	2
5	Stem	306	1
6	End Seal	PTFE	1
7	Thrust Washer	PTFE	1
8	Stem Packing	PTFE	1
9	Gland	304	1
10	Handle	304	1
11	Handle Washer	304	1
12	Handle Nut	304	1
13	Handle Sleeve	PCV	1
14	Locking Plate	304	1

All dimensions are in inches.

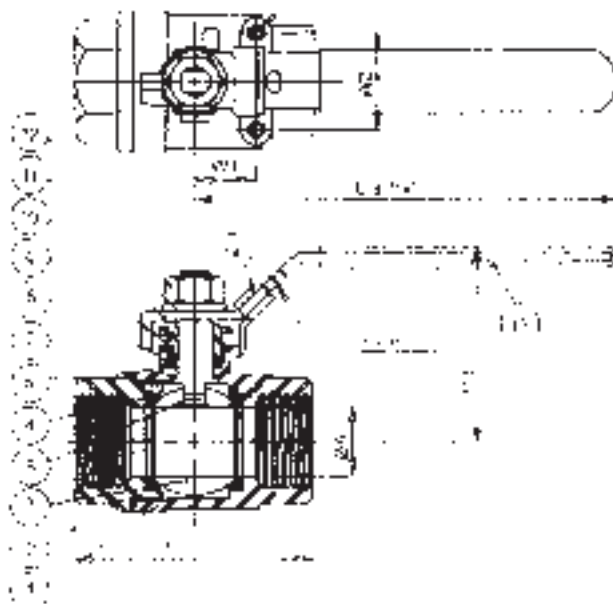
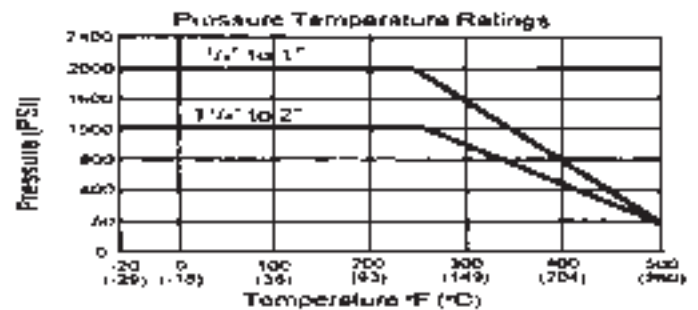
Part No.	Size	ØA	B	H	E	W1	W2	T	W (lb)
316146	1/4	3/8	2	2 3/16	3 15/16	1/2	1 1/8	3/16-24	7/16
316147	3/8	15/32	2	2 3/16	3 15/16	1/2	1 1/8	4	7/16
316148	1/2	1/2	2 3/8	2 8/32	3 15/16	1/2	1 1/8	4	3/4
316149	3/4	19/32	2 11/16	2 3/8	5 1/8	7/8	1 27/64	4	1
316150	1	25/32	3 1/4	2 1/2	5 1/8	7/8	1 27/64	4	1 1/2
316151	1 1/4	1	3 9/16	2 18/32	5 1/2	7/8	1 27/64	1/4-20	2 1/8
316152	1 1/2	1 1/4	4 3/32	3 1/8	6 1/2	1	1 1/2	4	3 5/8
316153	2	1 1/2	4 5/8	3 1/4	7 1/2	1	1 1/2	4	5



Model No. EX2S-20

Two Piece Stainless Steel Ball Valve - 1500/2000 WOG

Manufacturer Specifications: * API 598 * ASME B16.34 * ASME/AISI B.1.20.1 * MSS-SP-25 * VTM-V-35C



Material List - 2 Piece Stainless			
No	Part Name	Specification	Qty
1	Body	ASTM A351 GR CF8M	1
2	End Cap	ASTM A315 GR CF8M	1
3	Ball	ASTM A315 GR CF8M	1
4	Ball Seats	RPTFE	2
5	Stem	306	1
6	End Seal	PTFE	1
7	Thrust Washer	PTFE	1
8	Stem Packing	PTFE	1
9	Gland	304	1
10	Handle	304	1
11	Handle Washer	304	1
12	Handle Nut	304	1
13	Handle Sleeve	PCV	1
14	Locking Plate	304	1

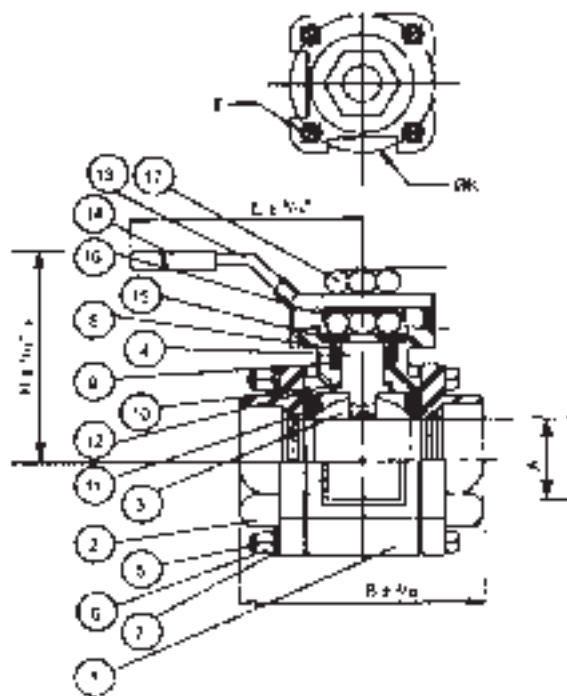
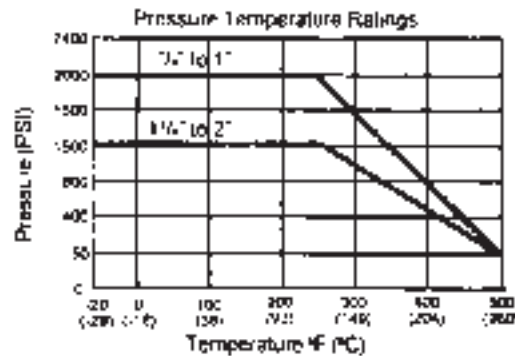
All dimensions are in inches.

Part No.	Size	ØA	B	H	E	W1	W2	T	W (lb)
31B136	1/4	1/4	2	2 3/16	3 5/16	1/2	1 1/8	3/16 24	7/16
31B137	3/8	3/8	2	2 3/16	3 15/16	1/2	1 1/8		7/16
31B138	1/2	1/2	2 3/8	2 9/32	3 15/16	1/2	1 1/8		3/4
31B139	3/4	3/4	2 11/16	2 3/8	5 1/8	7/8	1 27/64		1
31B140	1	1	3 1/4	2 1/2	5 1/8	7/8	1 27/64		1 1/2
31B141	1 1/4	1 1/4	3 9/16	2 19/32	6 1/2	7/8	1 27/64	14 20	2 1/8
31B142	1 1/2	1 1/2	4 3/32	3 1/8	6 1/2	1	1 1/2		3 5/8
31B143	2	2	4 5/8	3 1/4	7 1/2	1	1 1/2		5



Model No. Ex3S-20

Three Piece Bolted/In-Line Maintenance Stainless Steel Ball Valve – 1500/2000 WOG
Manufacturer Specifications: * API 598 * ASME B16.34 * ASME/AISI B.1.20.1
*** MSS-5P-25 * WW-V-35C**



Material List - 3 Piece - Bolted

No	Part Name	Specification	Qty
1	Body	ASTM A351 GR. CF8M	1
2	End Cap	ASTM A351 GR. CF8M	1
3	Ball	ASTM A351 GR. CF8M	1
4	Stem	316	1
5	Bolts	304	4
6	Bolt Nuts	304	4
7	Bolt Washer	304	4
8	Gland	304	1
9	Stem Packing	PTFE	1
10	Thrust Washer	PTFE	1
11	Ball Seat	PTFE	2
12	End Seal	PTFE	1
13	Handle	304	1
14	Handle Sleeve	PVC	1
15	Cup Spring	301	2
16	Lock Cap	304	1
17	Nut	304	2

All dimensions are in inches

Part No.	Size	ØA	B	H	E	ØK	T	W (lb)
316156	1/4	1/4	2 5/8	2 3/8	4 13/16	1 13/32	10-24	1/2
316157	3/8	3/8	2 5/8	2 3/8	4 13/16	1 13/32	□	1/2
316158	1/2	1/2	2 5/8	2 3/8	4 3/4	1 13/32	□	5/8
316159	3/4	3/4	2 13/16	2 3/8	4 3/4	1 13/32	□	1
316160	1	1	3 13/16	2 15/16	6 1/8	1 13/32	□	1 1/2
316161	1 1/4	1 1/4	4 1/4	3 1/16	6 1/8	1 13/32	1/4-20	2 1/8
316162	1 1/2	1 1/2	4 5/8	3 9/16	6 1/16	1 13/32	□	3 5/8
316163	2	2	5 1/32	3 5/8	6 7/16	2 3/4	5/16-18	4 7/8

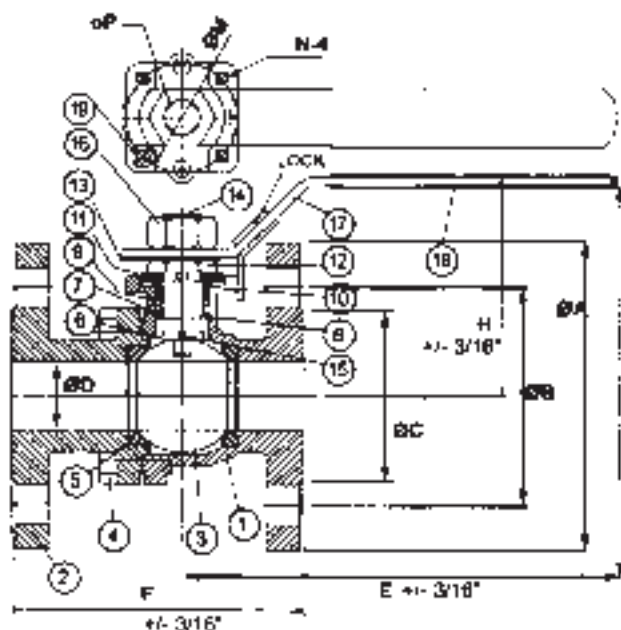
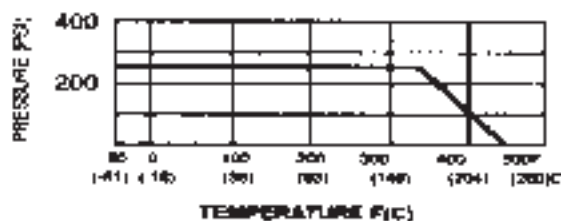


Model No. EX2F-20

Two Piece Flanged Stainless Steel Ball Valve – ANSI Class 150

Manufacturer Specifications: * AP1 598 * ASME B16.34 * ASME/AISI B.1.20.1 * MSS-SP-25 * ASME B16.5 (Flanged)
* MSS-SP72 (Flanged and Butt Welded) * WW-V-35C

PRESSURE TEMPERATURE RATINGS



Material List Flanged

No	Part Name	Specification	Qty
1	Body	316	1
2	Cap	316	1
3	Ball	316	1
4	Cap Bolt	304	4-8
5	Ball Seat	PTFE	2
6	Body Gasket	Spiral Wound	1
7	Stem Seal	PTFE	1
8	Stem seal	PTFE+Carbon	1s
9	Stem Packing	GRAFOIL	2
10	Thrust Washer	304	2-3
11	Discal Washer	316	2
12	Adjust Nut	304	1
13	Lock Washer	304	1
14	Stem	316	1
15	Anti-Static Device	316	1
16	Hand Nut	304	1
17	Handle	304	1
18	Plastic Cover	PVC	1
19	Lock Bolt	304	1s

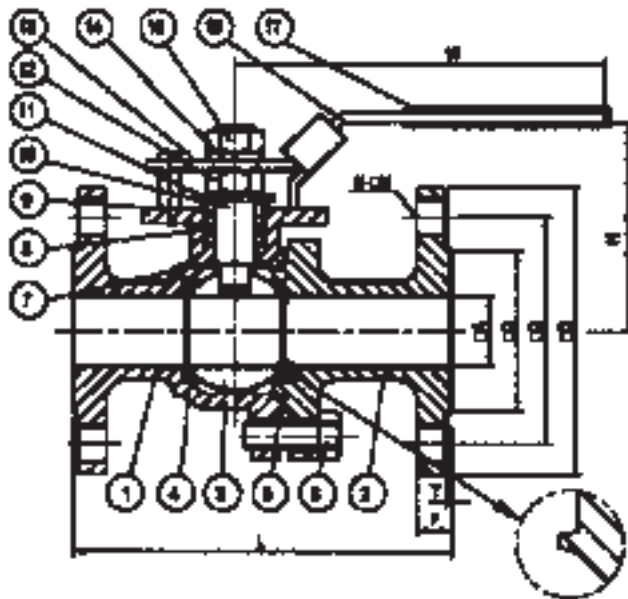
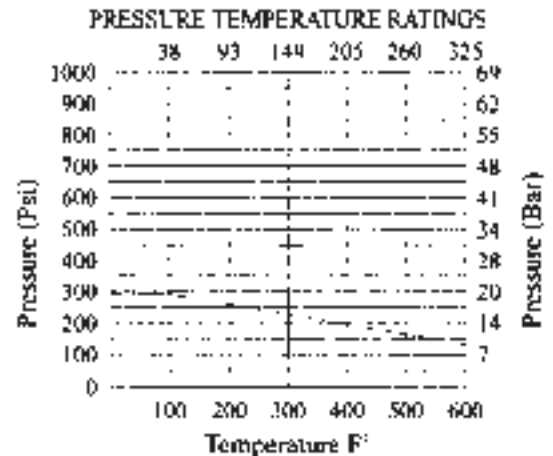
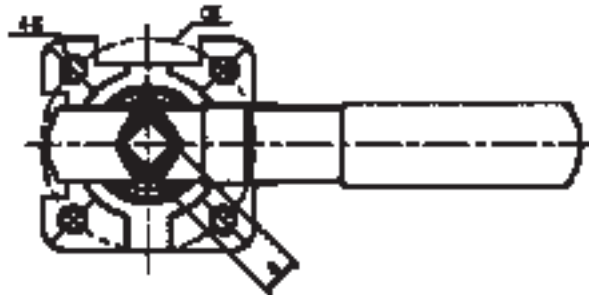
Dimensions Unit: Inch EX2F-20 2 piece Flanged Stainless Steel Ball Valve

Part No.	Size: O/D	F	H	E	pP	M	A	B	C	T	W (lb)
316201	1/2	4 1/2	3 1/4	4 15/16	7/16	1 21/32	3 1/2	2 3/8	1 3/8	M5	4
316202	3/4	4 5/8	3 3/8	4 15/16	7/16	1 21/32	3 7/8	2 3/4	1 11/16	M5	4 1/8
316203	1	5	3 9/16	5 7/8	7/16	1 21/32	4 1/4	3 1/8	2	M5	5 1/2
316204	1 1/4	5 1/2	4 1/16	7 7/8	9/16	1 21/32	4 5/8	3 1/2	2 1/2	M6	8
316205	1 1/2	6 1/2	4 1/4	7 7/8	9/16	1 21/32	5	3 7/8	2 7/8	M6	10 1/4
316206	2	7	5	9 7/8	1 1/16	2 3/16	6	4 3/4	3 5/8	M8	17 3/4
316207	2 1/2	7 1/2	5 13/16	12	1 1/16	2 3/16	7	5 1/2	4 1/8	M8	26
316208	3	8	6 3/8	12	1 1/16	2 3/16	7 1/2	6	5	M8	35 1/4
316209	4	9	7 3/8	13 3/8	7/8	4	9	7 1/2	6 3/16	M10	61 1/2



Model No. EX2F-30

Two Piece Flanged Stainless Steel Ball Valve - ANSI Class 300
 Manufacturer Specifications: *API 598* ASME B16.34
 *ASME/AISI B.1.20.1 *MSS-SP-25 *ASME B16.5 (Flanged)
 *MSS-SP72 (Flanged and Butt Welded) *WW-V-35C



MATERIAL OF CONSTRUCTION

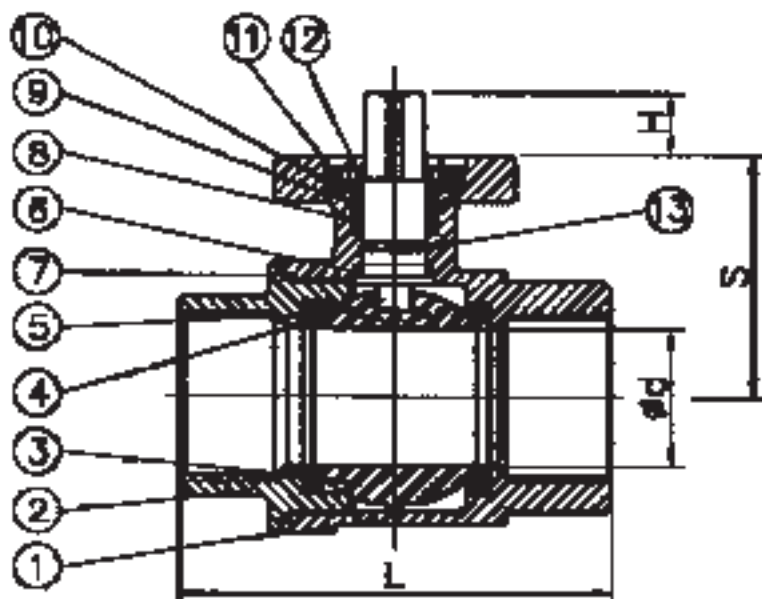
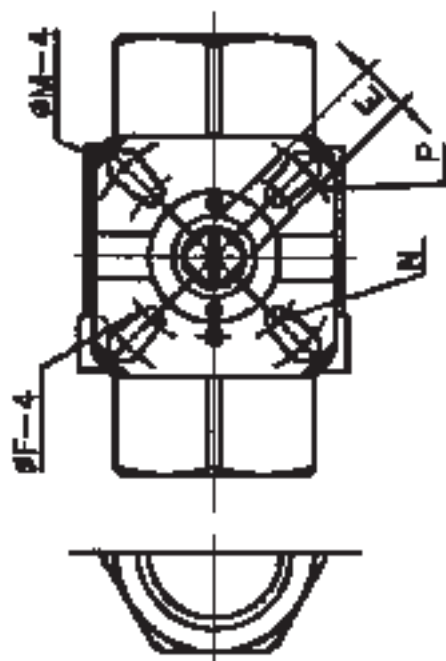
ITEM	PARTS	MATERIAL	QTY
1	BODY	A351 CF8M / A216 WCB	1
2	END CAP	A351 CF8M / A216 WCB	1
3	BALL	A351 CF8M / A216 WCB	1
4	SEAL	N-PINE	1
5	BODY SEAL	PTFE	1
6	BOLT	SUS 304	1
7	THRUST WASHER	PTFE	2
8	STEM PACKING	PIFE	4.8
9	RING	AISI304	4.8
10	STEM	AISI316	1
11	BEVEL WASHER	AISI304	1
12	NUT	AISI304	1
13	STOPPER	AISI304	1
14	SPRING WASHER	AISI304	1
15	NUT	AISI304	2
16	HANDLE	AISI304	1
17	PLASTIC COVER	PLASTIC	1

PART NO.	SIZE	A	C	G	D	E	F	T	L	M	K	N	S	H	W
316301	1/2	3/4	1.38	2.61	3.74	1.65	0.56	0.06	5.51	0.63	M5	0.157	0.433	3.31	6.00
316302	3/4	1	1.65	3.24	4.61	1.65	0.622	0.06	5.98	0.75	M5	0.157	0.433	3.51	6.00
316303	1	1	2.00	3.50	4.88	1.65	0.69	0.06	6.50	0.75	M5	0.157	0.433	3.70	6.00
316304	1 1/4	1 1/4	2.50	3.50	5.41	2.00	0.77	0.06	7.00	0.75	M6	0.157	0.551	4.41	7.88
316305	1 1/2	1 1/2	2.88	4.50	6.14	2.00	0.81	0.06	7.48	0.87	M6	0.157	0.551	4.72	7.88
316306	2	2	3.61	5.00	6.50	2.00	0.88	0.06	8.50	0.87	M6	0.157	0.551	5.12	7.88
316307	2 1/2	2 1/2	4.12	5.87	7.48	2.75	1.00	0.06	9.45	0.87	M8	0.157	0.67	6.38	13.00
316308	3	3	5.00	6.61	8.27	2.75	1.12	0.06	11.15	0.87	M8	0.315	0.67	7.36	13.00
316309	4	4	6.19	7.87	13.94	4.02	1.25	0.06	12.00	0.87	M10	0.315	0.87	8.15	13.00

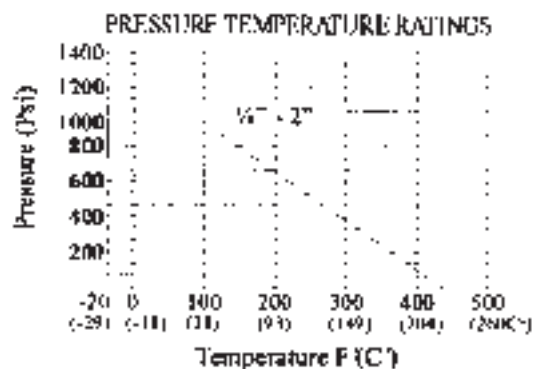
EXCALIBUR VALVES

Two Piece Direct Mount S.S. Ball Valve
 Specifications: API 598 • ASME B16.34
 ASME/AISI B.1.20.1 • MSS-P-25 • WW-V-35C

Model No. EX2S-DM



#	PART NAME	MATERIAL		QTY
		STAINLESS STEEL	CARBON STEEL	
1	BODY	CF8M	WCB	1
2	CAP	CF8M	WCB	1
3	BALL	CF8M	WCB	1
4	STEM	SS316	SS316	1
5	BALL SEATS	PTFE	PTFE	2
6	THRUST WASHER	CARBON GRAPHITE	CARBON GRAPHITE	1
7	GASKET	PTFE	PTFE	1
8	STEM PACKING	PTFE	PTFE	1
9	THRUST WASHER	CARBON GRAPHITE	CARBON GRAPHITE	1
10	FOLLOWER LIP	SS304	SS304	1
11	BEVEL WASHER	SUS 304-CSP	SUS 304-CSP	1
12	GLAND NUT	SS304	SS304	1
13	O-RING	VITON	VITON	1



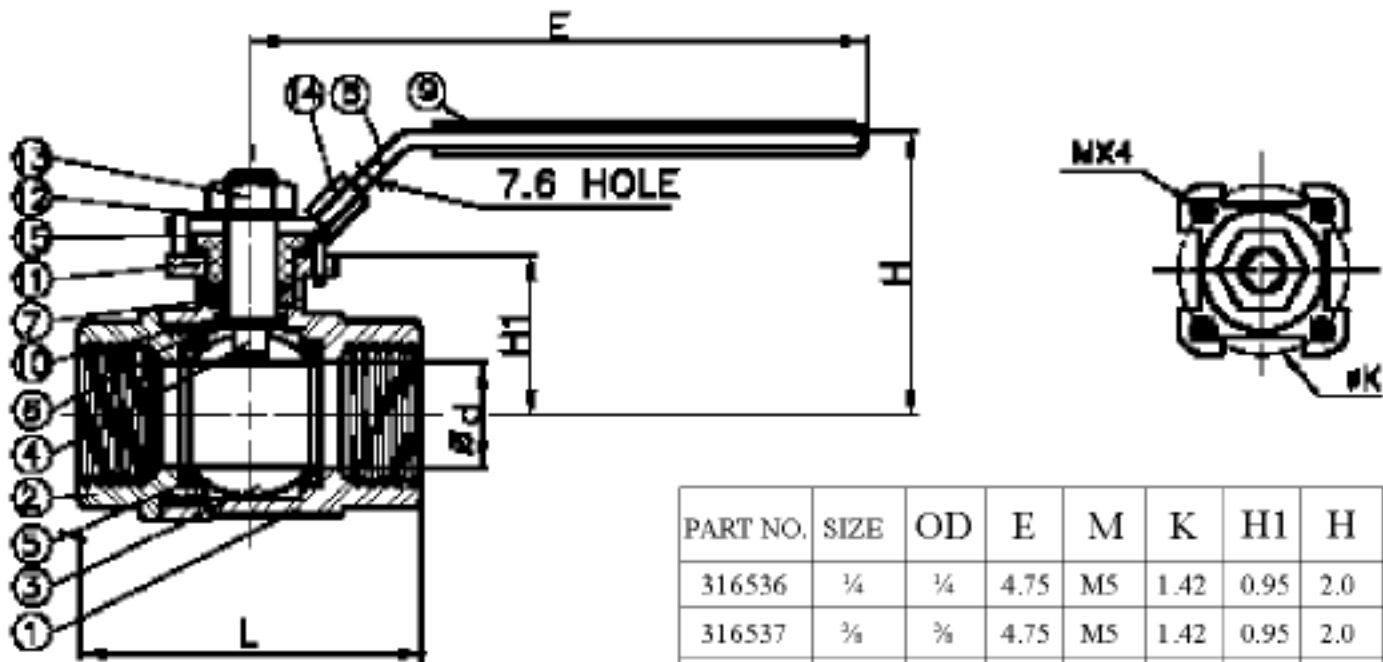
PART NO	SIZE	D	L	F	M	N	P	H	E	S
316218	1/2	1/2	2.95	0.24	0.24	1.42	1.65	0.32	0.35	1.45
316219	3/4	3/4	3.15	0.24	0.24	1.42	1.65	0.33	0.35	1.71
316220	1	1	3.54	0.24	0.28	1.65	1.97	0.45	0.43	2.10
316221	1 1/4	1 1/4	4.33	0.24	0.28	1.65	1.97	0.45	0.43	2.32
316222	1 1/2	1 1/2	4.72	0.28	0.35	1.97	2.76	0.69	0.55	2.66
316223	2	2	5.51	0.28	0.35	1.97	2.76	0.69	0.55	2.95

EXCALIBUR VALVES

Model No. EX2S-30

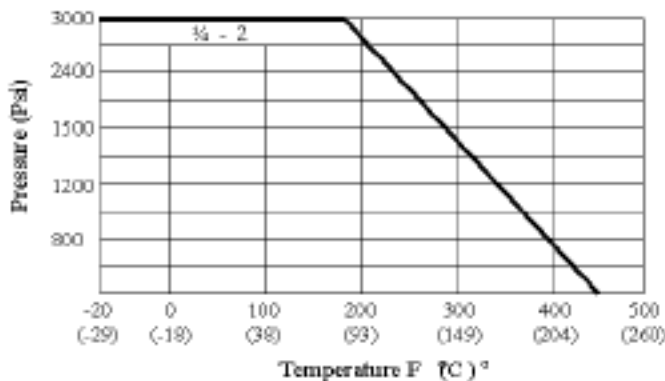
EX2S-30 Series Working Pressure: 3000psi

- Floating Ball
- Blow-out Proof Stem
- ¼" - 2" Full Port
- Fire-Safe Design
- Standard Locking Handle
- Actuator Mounting Pad
- TFM1600 Seats
- Conforms to NACE MR-01-75 Standard



PART NO.	SIZE	OD	E	M	K	H1	H	L
316536	¼	¼	4.75	M5	1.42	0.95	2.0	2.36
316537	¾	¾	4.75	M5	1.42	0.95	2.0	2.36
316538	½	½	4.75	M5	1.42	1.15	2.17	2.95
316539	¾	¾	5.7	M5	1.65	1.28	2.56	3.15
316540	1	1	5.7	M5	1.65	1.65	2.84	3.55
316541	1¼	1¼	7.0	M6	2.0	2.0	3.35	4.33
316542	1½	1½	7.0	M6	2.0	2.13	3.55	4.72
316543	2	2	7.0	M6	2.0	2.48	3.86	5.5

PRESSURE TEMPERATURE RATINGS



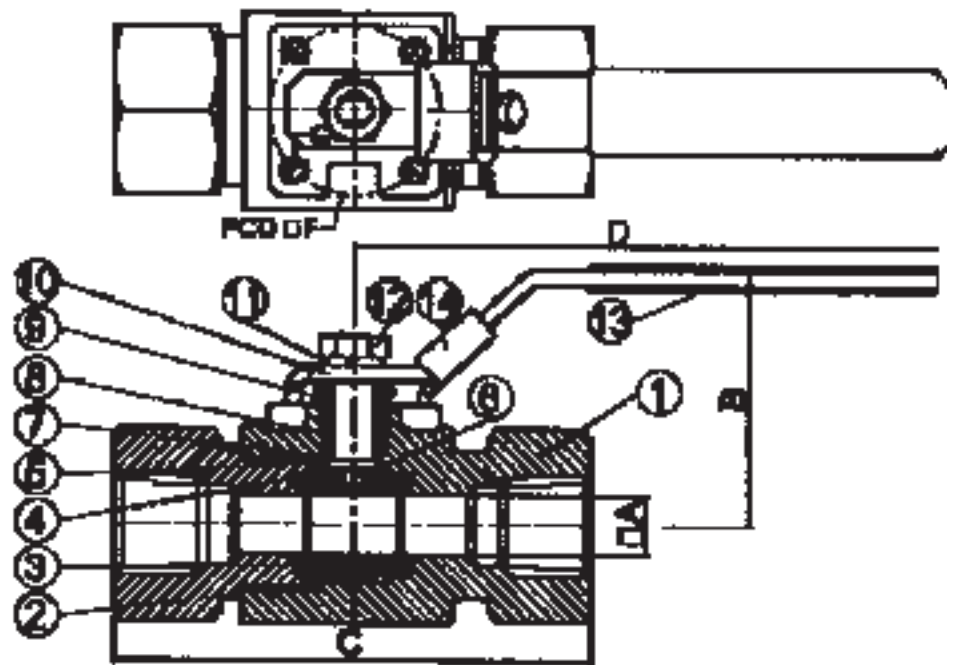
#	PART NAME	MATERIAL
1	BODY	CF8M
2	BONNET	CF8M
3	BALL	CF8M
4	STEM	SS316
5	BALL SEATS	TFM1600
6	END SEAL	PTFE
7	STEM PACKINGS	PTFE
8	HANDLE	SS304
9	HANDLE SLEEVE	VINYL GRIP
10	THRUST WASHER	PTFE
11	GLAND	SS304
12	WASHER	SS304
13	HANDLE NUT	SS304
14	LOCKING PLATE	SUS304
15	STOP PIN	SUS304

EXCALIBUR VALVES

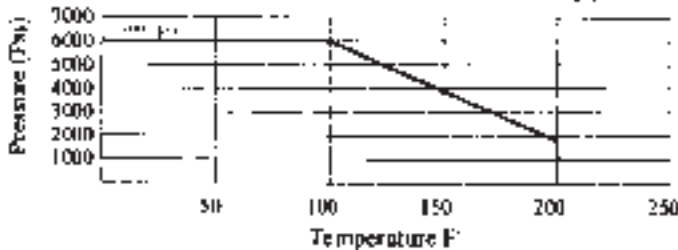
Model No. EX2S-60

EX2S-60 Series Working Pressure: 6000psi

- Floating Ball
- Blow-out Proof Stem
- 1/2" - 1 1/2" Full Port
2" Standard Port
- Fire-Safe Design
- Standard Locking Handle
- Actuator Mounting Pad
- Delrin Seats Standard
- Conforms to NACE MR-01-75 Standard
- Ball includes Pressure Equalization Hole to prevent trapped pressure in body cavity



PRESSURE TEMPERATURE RATINGS



#	PART NAME	MATERIAL
1	BODY	A351 CF8M / A216 WCB
2	END CAP	A351 CF8M / A216 WCB
3	BALL	A351 CF8M
4	BALL SEAT	PEEK / DELRIN
5	BODY SEAL	PTFE
6	STEM	A564 630-F11150 (17-4 PH)
7	THRUST WASHER	PEEK / DELRIN
8	STEM PACKING	GRAPHITE
9	GLAND NUT	SUS304
10	STEM WASHER	SUS304
11	STEM NUT	SUS 304
12	HANDLE	SUS 304
13	HANDLE COVER	PVC
14	HANDLE LOCKING	SUS304

PART NO.	SIZE	A	B	C	D	PCD F	G
316636	1/4	1/4	2.20	3.00	5.08	1.42	M5*0.8P
316637	3/8	3/8	2.20	3.00	5.08	1.42	M5*0.8P
316638	1/2	1/2	2.20	4.00	5.08	1.42	M5*0.8P
316639	3/4	3/4	2.68	4.25	5.90	1.65	M5*0.8P
316640	1	1	3.64	4.50	8.07	1.65	M5*0.8P
316642	1 1/2	1 1/2	4.45	5.25	10.24	1.97	M6*1.0P
316643	2	1 1/2	4.45	6.65	10.24	1.97	M6*1.0P



CLASS 125 NRS CI GATE VALVE

Model No. EXGT-125 Non Rising Stem

Design and manufacture conform to MSS SP-70

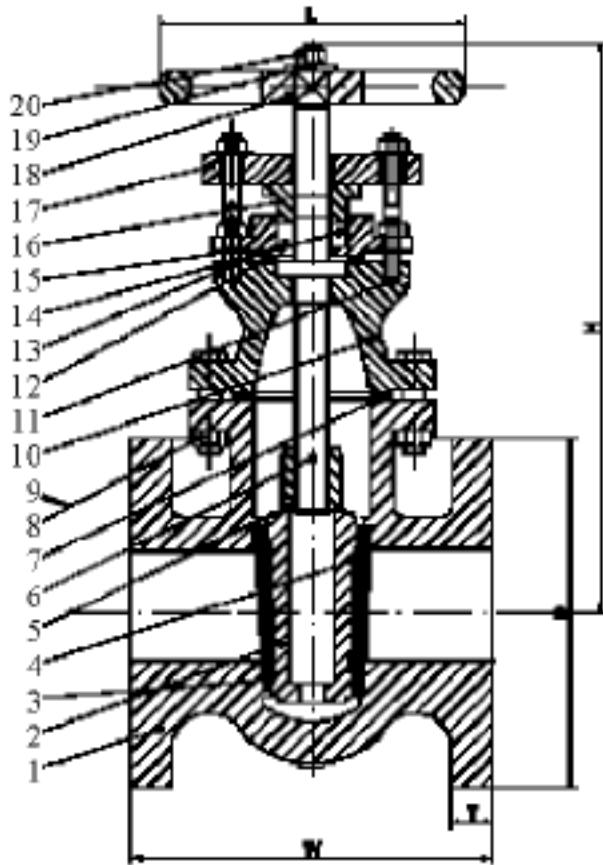
Flange dimensions conform to ANSI B16.10

Face to face dimensions conform to ANSI B16.10

Testing conforms to API 598

Bolted Bonnet

Class 125



#	PART NAME	MATERIAL
1	BODY	ASTMA 126CLASSB
2	SEAT RING	ASTM B62
3	WEDGE FACE RING	ASTM B62
4	WEDGE	ASTMA 126CLASSB
5	WEDGE NUT	ASTM B16
6	STEM	ASTM B16
7	BODY GASKET	NBR
8	BOLT	ASTMA307-B
9	NUT	ASTMA307-B
10	BONNET	ASTMA 126CLASSB
11	GLANDFOLLOWER BOLTS	ASTMA307-B
12	STUFFING BOX GASKET	NONASBESTOS
13	STUFFING BOX	ASTMA126CLASSB
14	PACKING	GRAPHITE
15	GLAND FOLLOWER	ASTMA636.65-45-12
16	PACKING GLAND	ASTMA584
17	HANDWHEEL	ASTMA 126CLASSB
18	IDENTIFICATION PLATE	ALUMINUM
19	WASHER	ASTM A307-B
20	HANDWHEEL NUT	ASTM A307-B

PART NO.	SIZE	W	H	L	D	T
316936	2	7.00	11.00	7.00	6.00	.63
316937	2½	7.50	12.50	7.00	7.00	.69
316938	3	8.00	13.13	8.00	7.50	.75
316939	4	9.00	15.25	10.00	9.00	.94
316940	5	10.00	17.81	12.00	10.00	.94
316941	6	10.50	19.95	12.00	11.00	1.00
316942	8	11.50	25	13.70	13.50	1.13
316943	10	13.00	28.94	16.00	16.00	1.19
316944	12	14.00	34.44	18.00	19.00	1.25